

Ethical AI in Education: SD62 Guiding Principles

The Sooke School District's five guiding principles for the use of Artificial Intelligence (AI) — **Inclusivity, Safety, Respect, Collaboration, and Integrity** — align with the BC Ministry of Education's guidance for ethical, responsible, and human-centered AI use in K–12 education. These principles reflect and reinforce the core values outlined in our District Strategic Plan by promoting equitable access, safeguarding wellbeing, fostering transparency, strengthening community engagement, and upholding accountability and academic integrity. Together, they ensure AI integration advances student success while remaining grounded in our commitment to ethical practice and inclusive learning.

INCLUSIVITY

Ensure equitable, accessible, and bias-aware AI use in education.

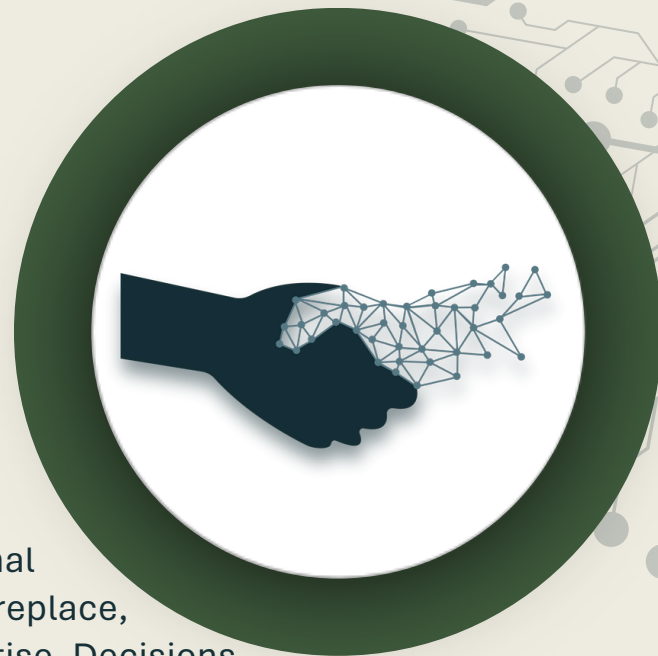
We commit to ensuring AI supports every learner. AI systems must reflect the diversity of our school communities and eliminate barriers by design. Tools are evaluated for potential bias and designed to accommodate diverse needs, learning styles and cultural contexts.



INTEGRITY

Ensure ethical, accountable, and responsible AI use in education.

We commit to using AI in ways that align with our educational values and professional standards. AI will be used to enhance, not replace, human judgment, relationships, and expertise. Decisions involving AI remain accountable to people, not algorithms. We actively monitor AI tools for accuracy, reliability, and unintended consequences, and we take responsibility for correcting errors or misuse. Integrity means using AI thoughtfully, critically, and always in the best interests of students.



SAFETY

Safeguard the privacy, well-being, and appropriate use of AI.

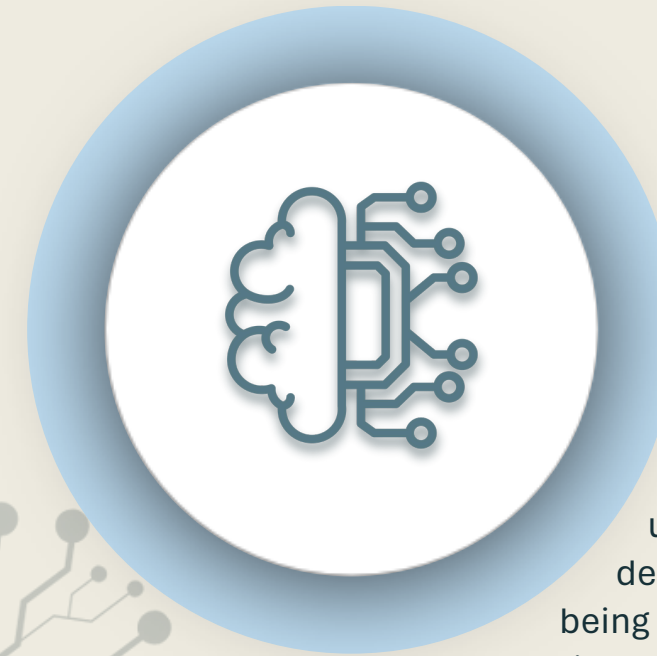
We prioritize the physical, emotional, and digital safety of all. AI tools used in the district are subject to vetting to ensure they meet provincial privacy and cybersecurity standards. AI must support student mental health, avoid harm and always include human oversight.



RESPECT

Promote transparency, data dignity, and informed use of AI.

We are transparent in how AI is used, what data is collected, and how decisions are made. Respect means being honest about the limits of AI and ensuring students, staff, and families know when AI is being used and why.



COLLABORATION

Foster shared responsibility and inclusive decision-making in AI.

We engage students, educators, families, and community stakeholders in ongoing, informed conversations about AI. Collaboration ensures that AI tools, practices, and policies reflect diverse perspectives, align with district priorities, and support meaningful, ethical learning for all. Through shared responsibility and transparent dialogue, we strengthen public trust and ensure AI use remains responsive, accountable, and focused on student success.

